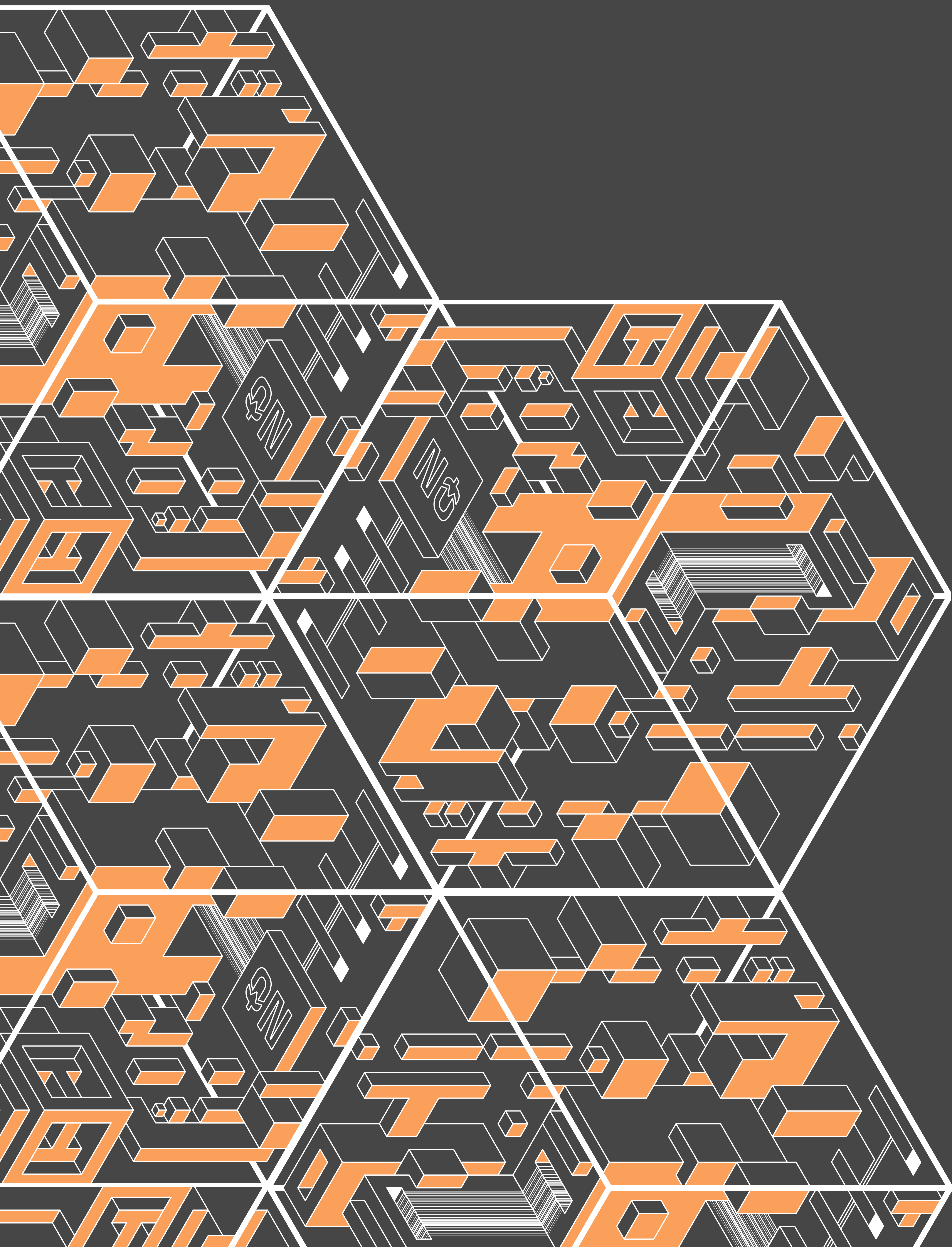


Nössknacker

real-time actions on data



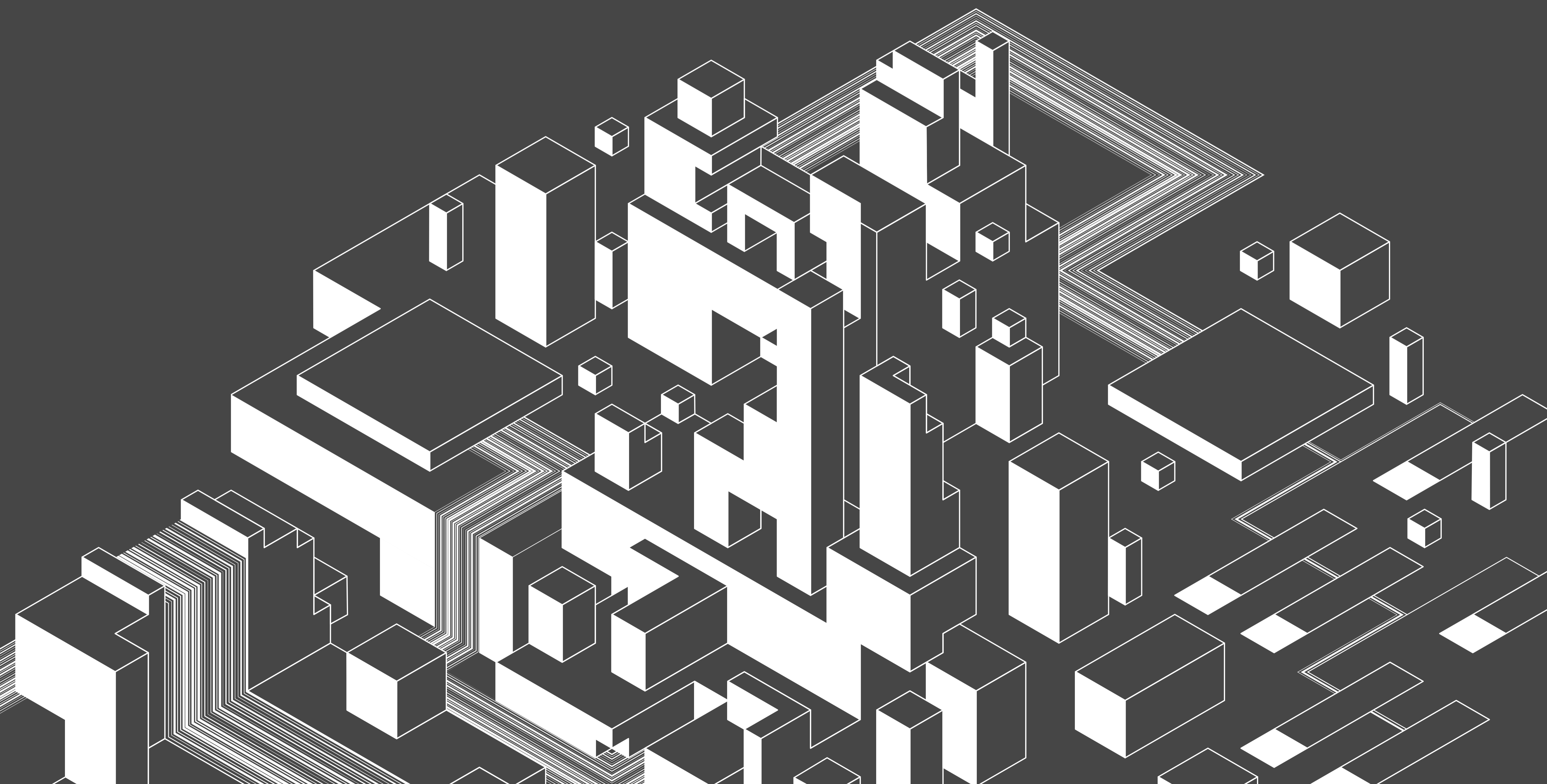
future-fit solutions for

The innovation-deployment cycle for real-time data systems is not meeting current business expectations.

Instead of living up to the name 'real-time', the systems are slow to respond to required updates in business logic and system requirements.

As a result, a window of opportunity for timely action can be lost.

To address this, Nussknacker makes the technology **adaptable** and provides the agile tool to act on data in real time.



Nussknacker speeds up what can be done with real-time data

1/2

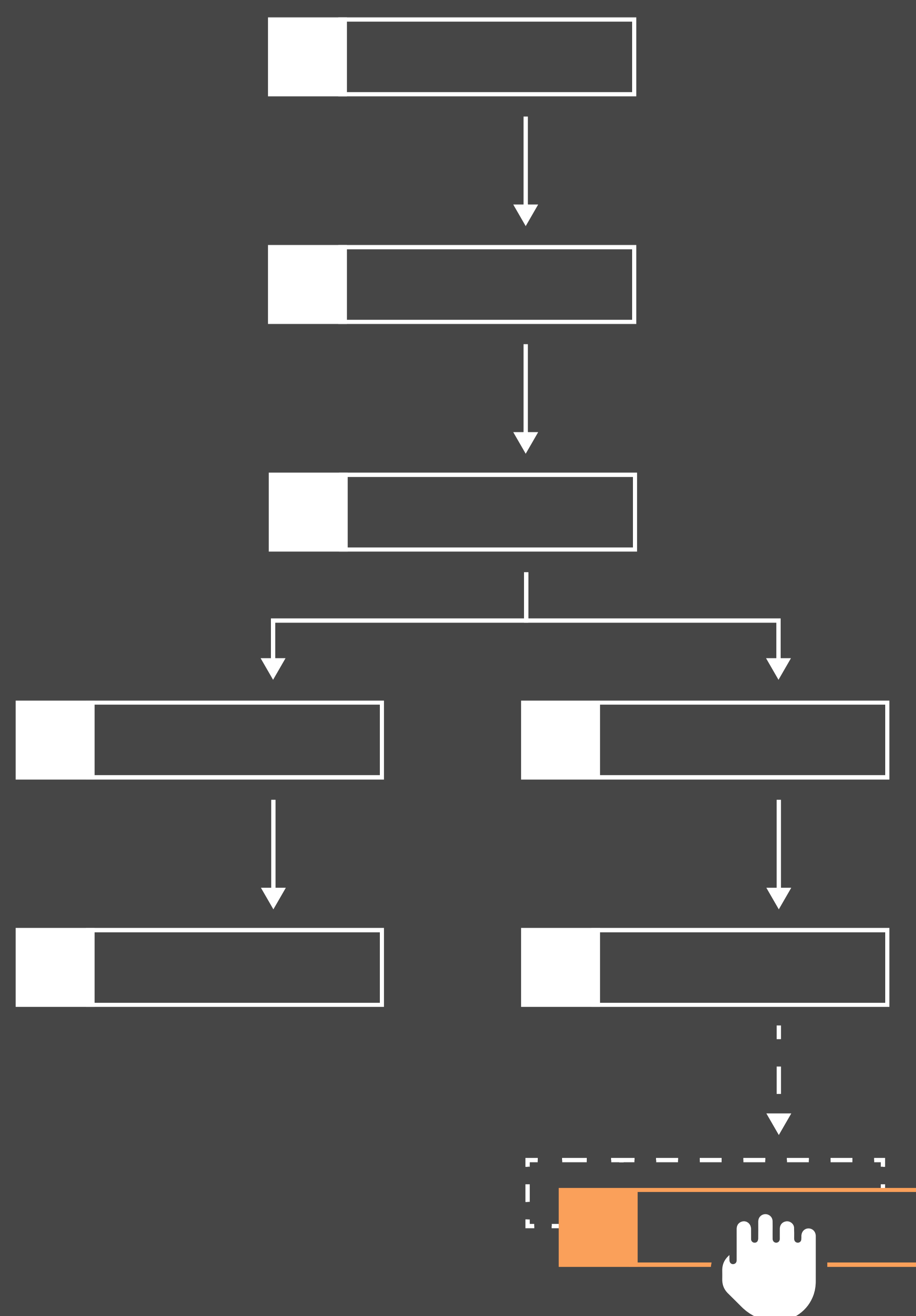
The user interface

Your teams can build business logic on real-time data, experiment or react to what has just happened in the market without spending developer time - even in technically challenging systems.

The interface hides all the complexity of the data and allows users to experiment safely.

Through the interface, changes to the business logic are deployed on the fly, without middlemen.

Your organisation can act and react without delay.



Nussknacker speeds up what can be done with real-time data

2/2

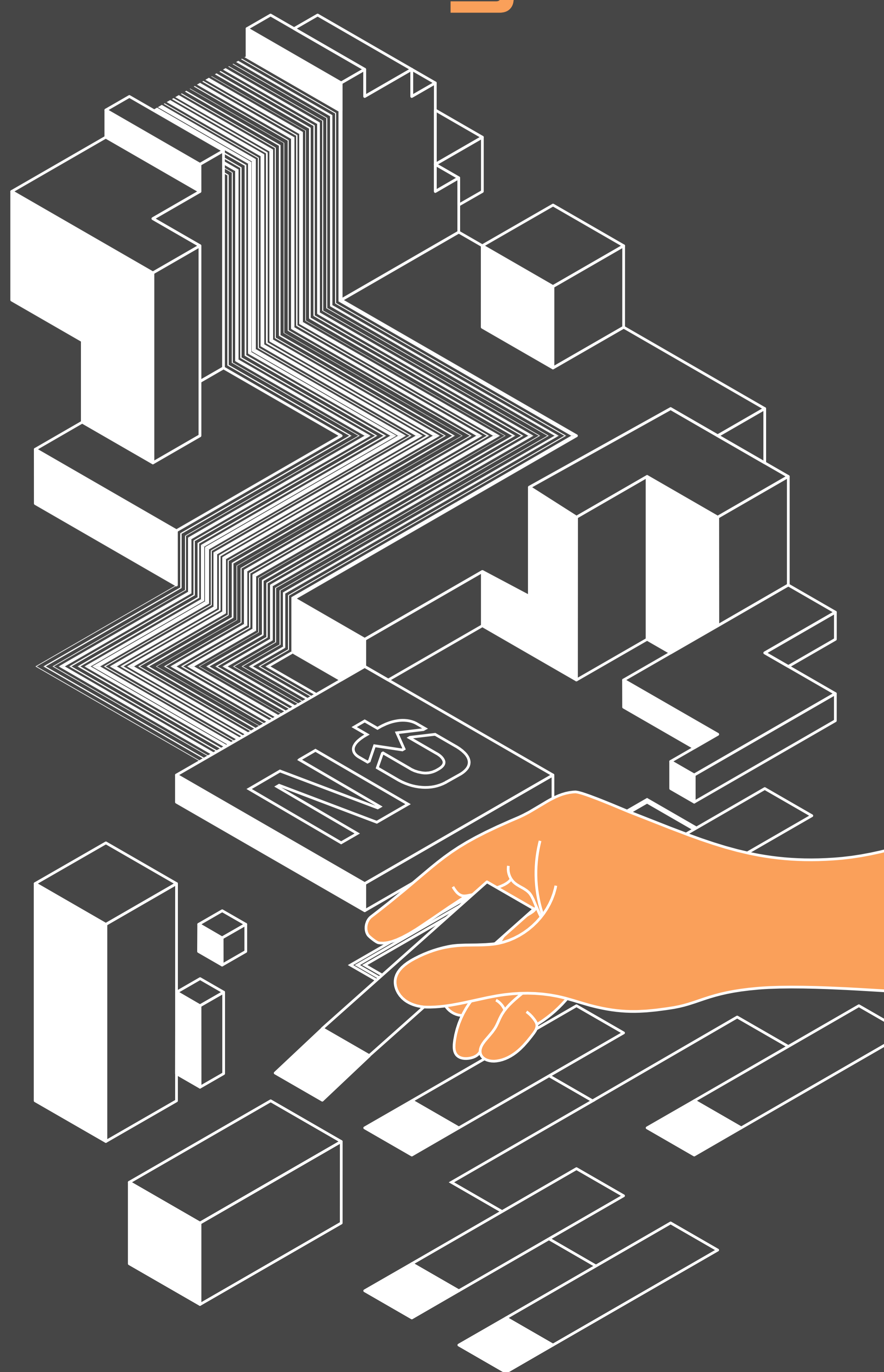
The extensibility

When business requirements change and engineers need to extend the system, Nussknacker provides the fastest path to implementation.

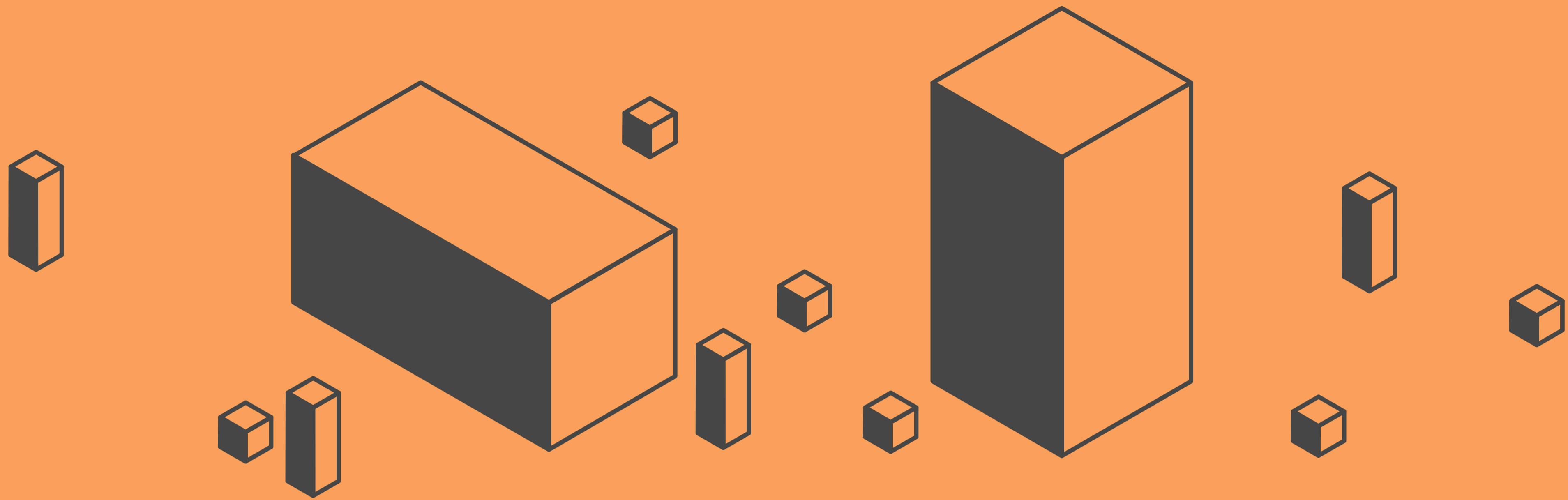
IT can add custom sources, or enrichments, as they see fit.

They can then add a component to the user interface - allowing immediate action in the enhanced system.

Nussknacker can work with the latest technologies such as Kafka or Flink (or Redpanda or Event Hubs), so it fits into multiple architectures.



A horizontal or vertical tool?



Or rather easy to extend or not? The future will demand more agility from the system, not less. So it is not only the current fitness that counts, but also the ability to adapt quickly to changing conditions. Nussknacker has been designed to be quickly extensible and adaptable, favouring present and future fitness.

Expert rules or ML algorithms?



Both. Nussknacker makes business logic explicit and easy to track and modify. And you can explicitly use inference from ML models. It's up to you.

Return on investment

- **development cost reduction** - easy extensibility means less time and resources spent on development
- **operating cost reduction** - domain experts can do what software developers used to do
- **faster time to value** - our clients appreciate the rapid deployment cycle and its business benefits



Tried and tested in telecom companies with millions of users to run ■

- real-time marketing campaigns
- fraud detection in real-time
- credit risk evaluation